

LAKELAND COUNTY ILL.

LITTLE MOUNTAIN ROAD

265-635 F. Schafer 35.64 Ac

20471A  
3 1/2 Butcher, B W King 470-548

39-266; 212-403 Little Mountain Club 36.16 Ac

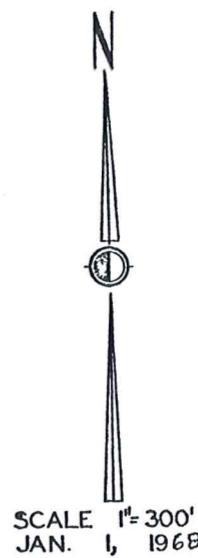
264, 16 3/4, 15 0/4 & 10 3/4 Ac

453-167  
S Martin  
391-647  
552  
P. Hitchcock

1193A  
3 1/2 Butcher,  
B W King  
470-548

265-635 F. Schafer 1205 Ac

368-237 A B King 99 40 Ac



# CHARDON TWP - A NOT TO SCALE 1968

SEC. ONE

SEC. TWO

295-202 The Holden Arboretum  
40 Ac

392-1  
15 1/4 Ac  
H Hitchcock

423-205  
19 53  
H Hitchcock

315-494  
J E Garfield  
20 9 Ac

4

55.91 A  
F. M<sup>rs</sup> Connell et al.

3

237 Ac  
E. M. Millan  
362-200

6

E. M. Millan  
32.28 Ac  
391-788 Parcel 13  
Parcel 2

GRISWOLD ROAD

392-10  
4837 A  
E Hitchcock

395-217  
15 63 Ac  
E. Hitchcock

395-220  
P Hitchcock

335-135  
M Hitchcock

10 15 A  
Parcel 16  
485-756

CHARDON TWP 'A'

A	B	C	D
E	F	G	H
I	J	K	L
M	N	O	P

15 06 & 19 79 Ac

66.18 Ac

314 Ac  
M Hitchcock

330 Ac  
M Hitchcock

392-66  
P Hitchcock

392-64  
P Hitchcock

316-555  
723A  
A C Canfield

14 38 A  
E. M. Millan

SEC. ONE

FOUR

SEC. THREE

TRACT

Cleveland Trust

14287A  
M E Hitchcock  
487-376

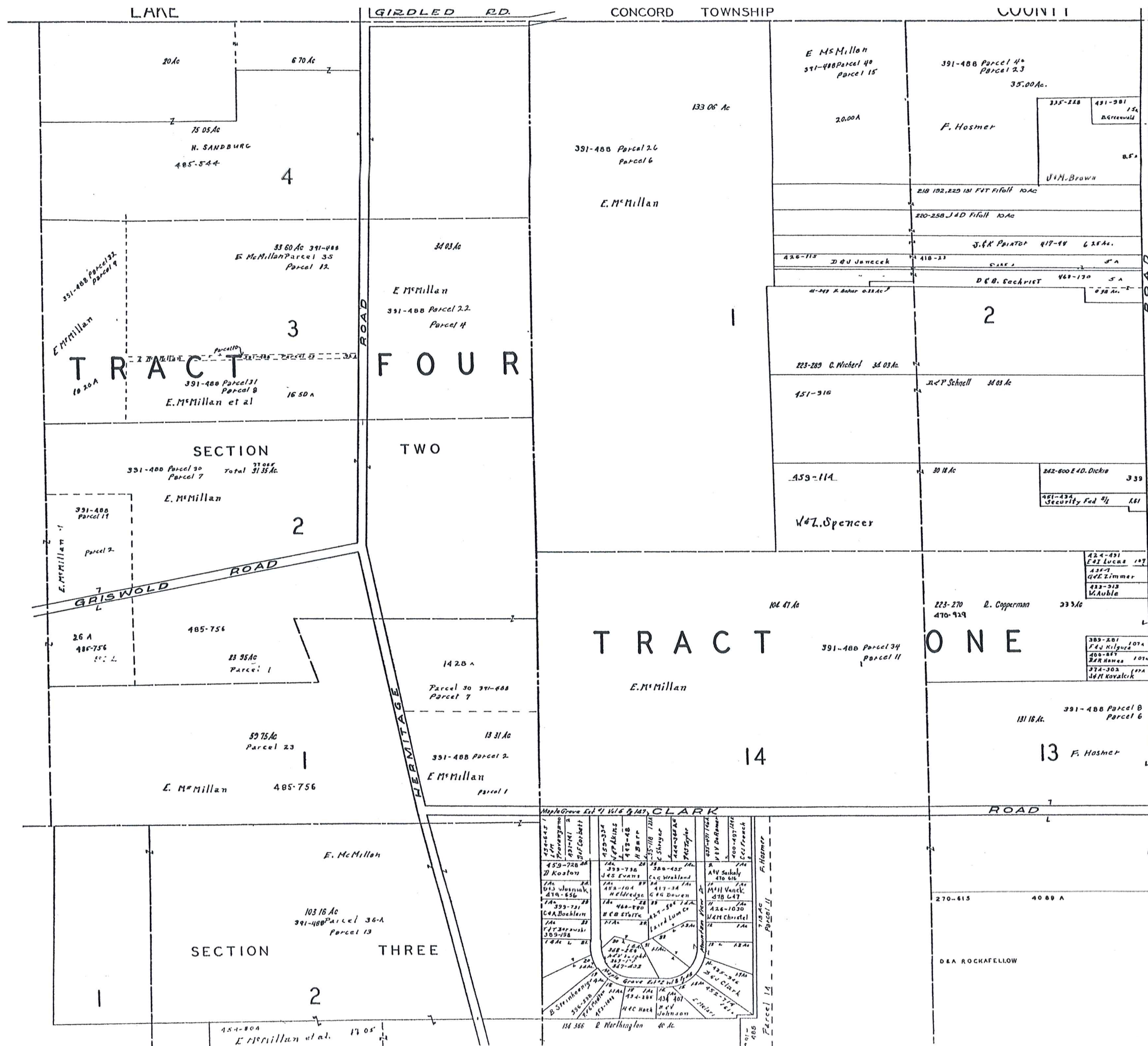
425-662  
P Hitchcock

11 45 A  
M. Johnson

331-488 Parcel 42  
Parcel 16

52.00 A  
E M Millan

FOUR



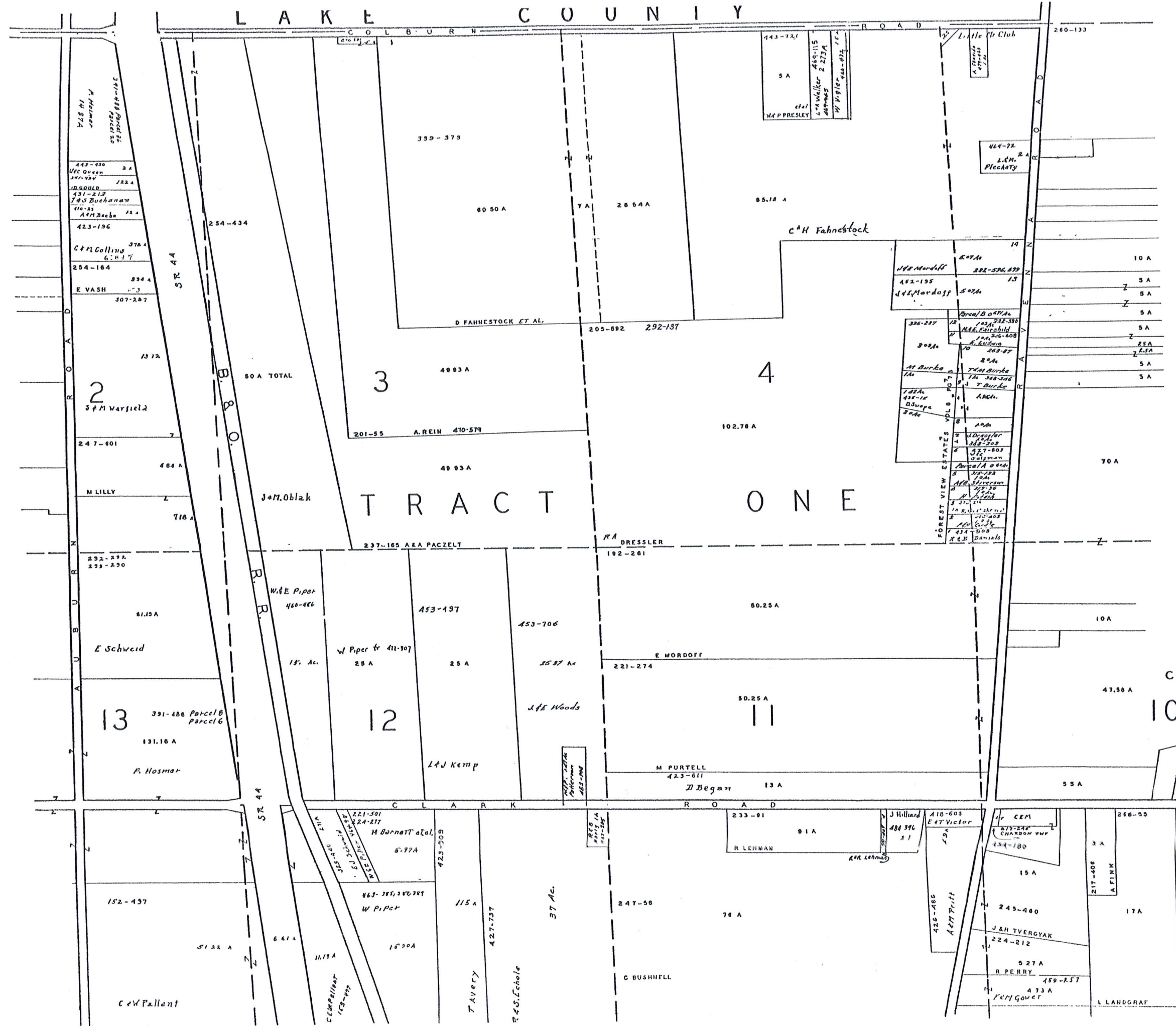
SCALE 1" = 300'  
JAN. 1, 1968

# CHARDON TWP - B NOT TO SCALE 1968

CHARDON TWP "B"

A	B	C	D
E	F	G	H
I	J	K	L
M	N	O	P

L A K E C O U N T Y

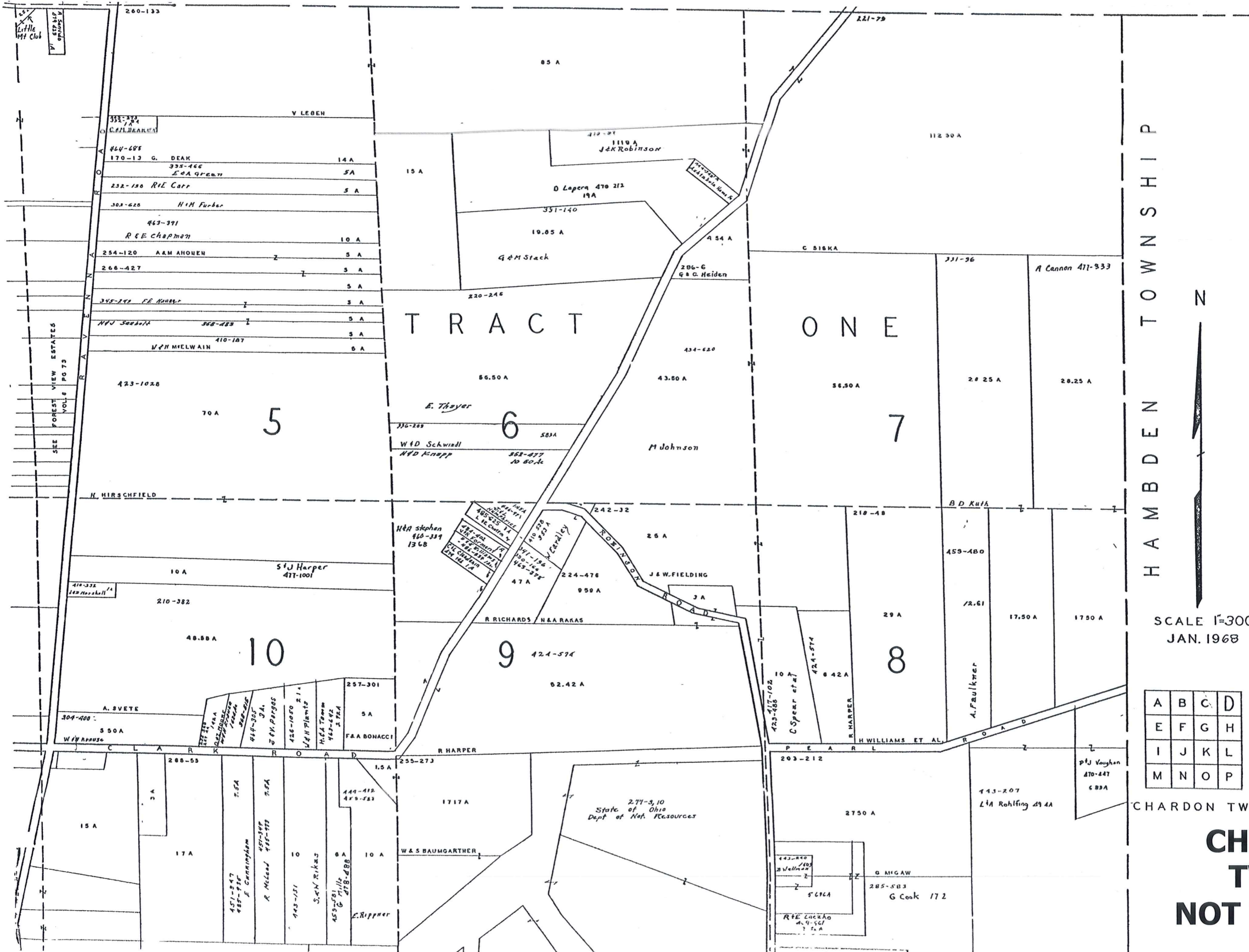


SCALE 1"=300'

A	B	C	D
E	F	G	H
I	J	K	L
M	N	O	P

CHARDON TWP.  
JAN. 1 1968

**CHARDON  
TWP - C  
NOT TO SCALE  
1968**



HAMB DEN TOWNSHIP



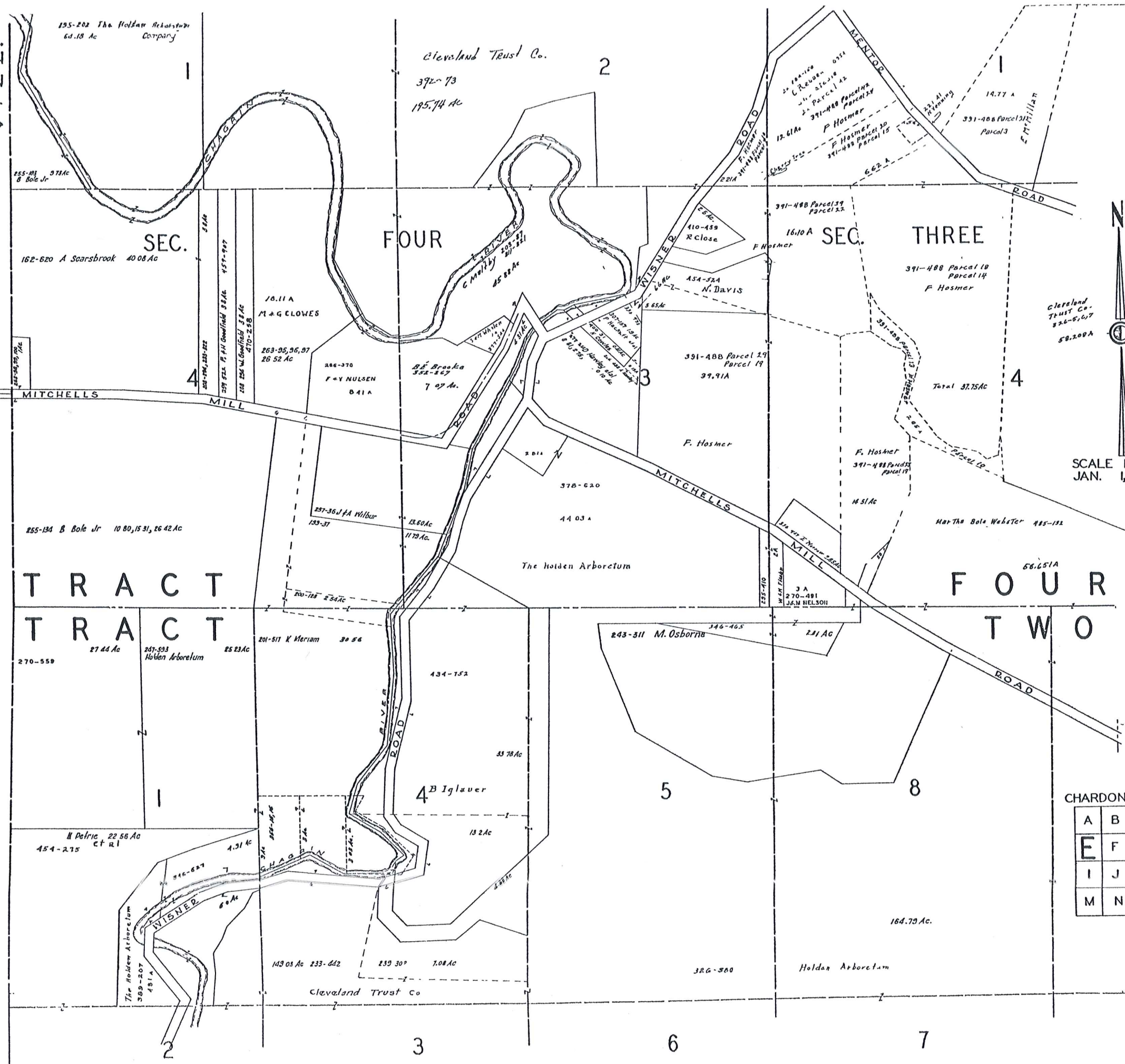
SCALE 1"=300'  
JAN. 1968

A	B	C	D
E	F	G	H
I	J	K	L
M	N	O	P

CHARDON TWP

**CHARDON  
TWP - D  
NOT TO SCALE  
1968**

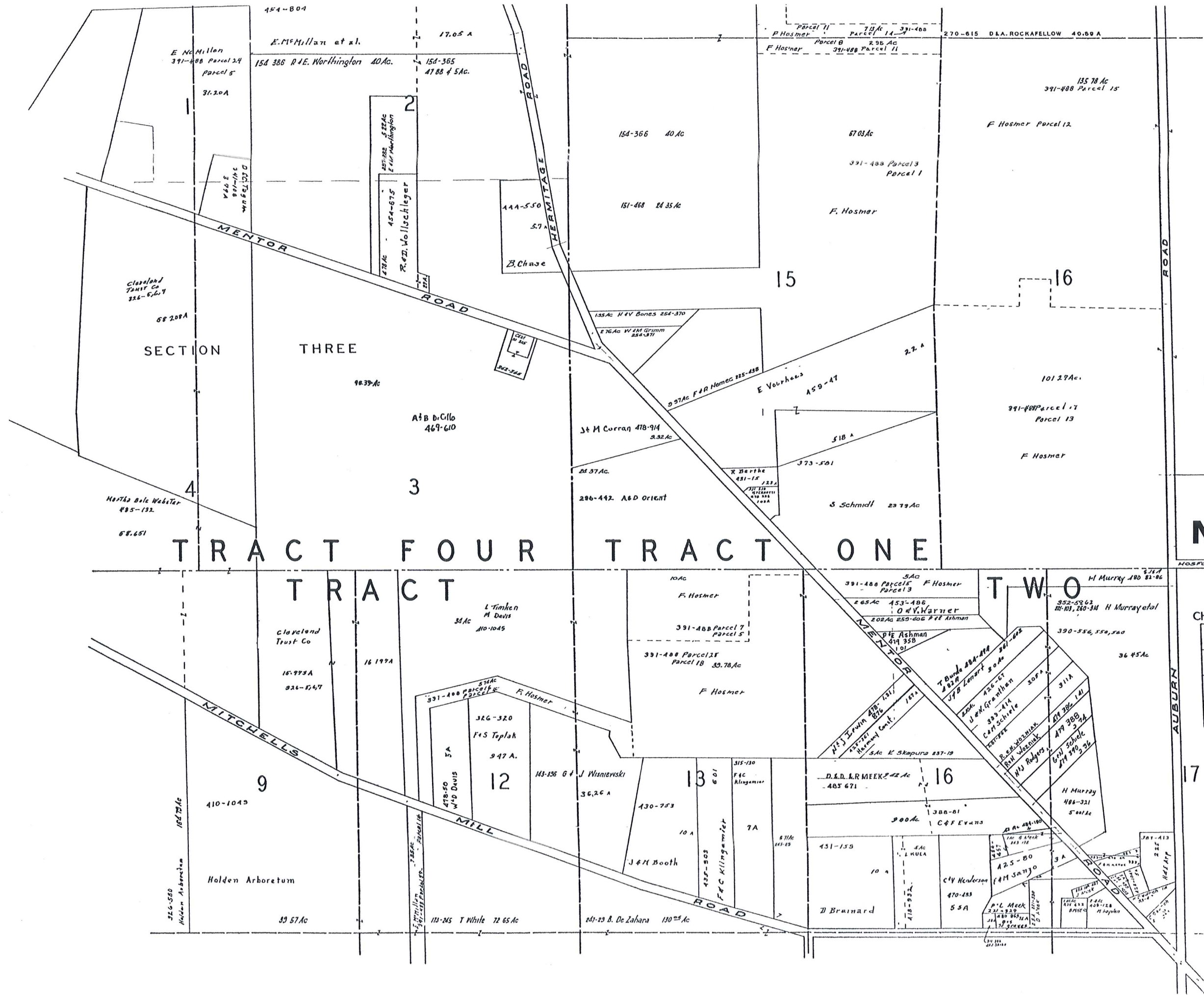
KIRTLAND HILLS  
COUNTY  
COCUMPTWP  
KIRTLAND



# CHARDON TWP - E NOT TO SCALE 1968

CHARDON TWP 'E'

A	B	C	D
E	F	G	H
I	J	K	L
M	N	O	P

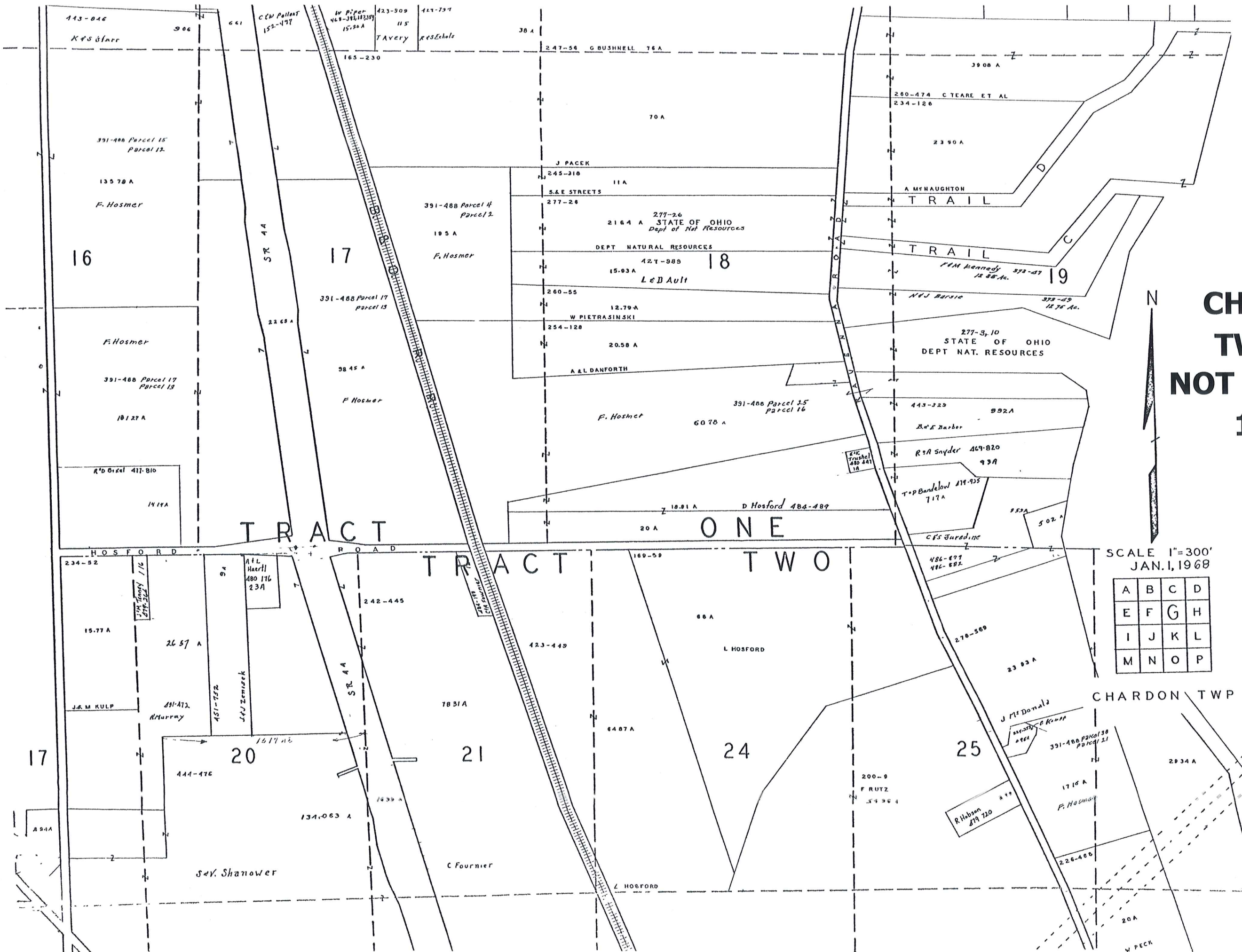


SCALE 1" = 300'  
JAN. 1, 1968

# CHARDON TWP - F NOT TO SCALE 1968

CHARDON TWP F

A	B	C	D
E	F	G	H
I	J	K	L
M	N	O	P

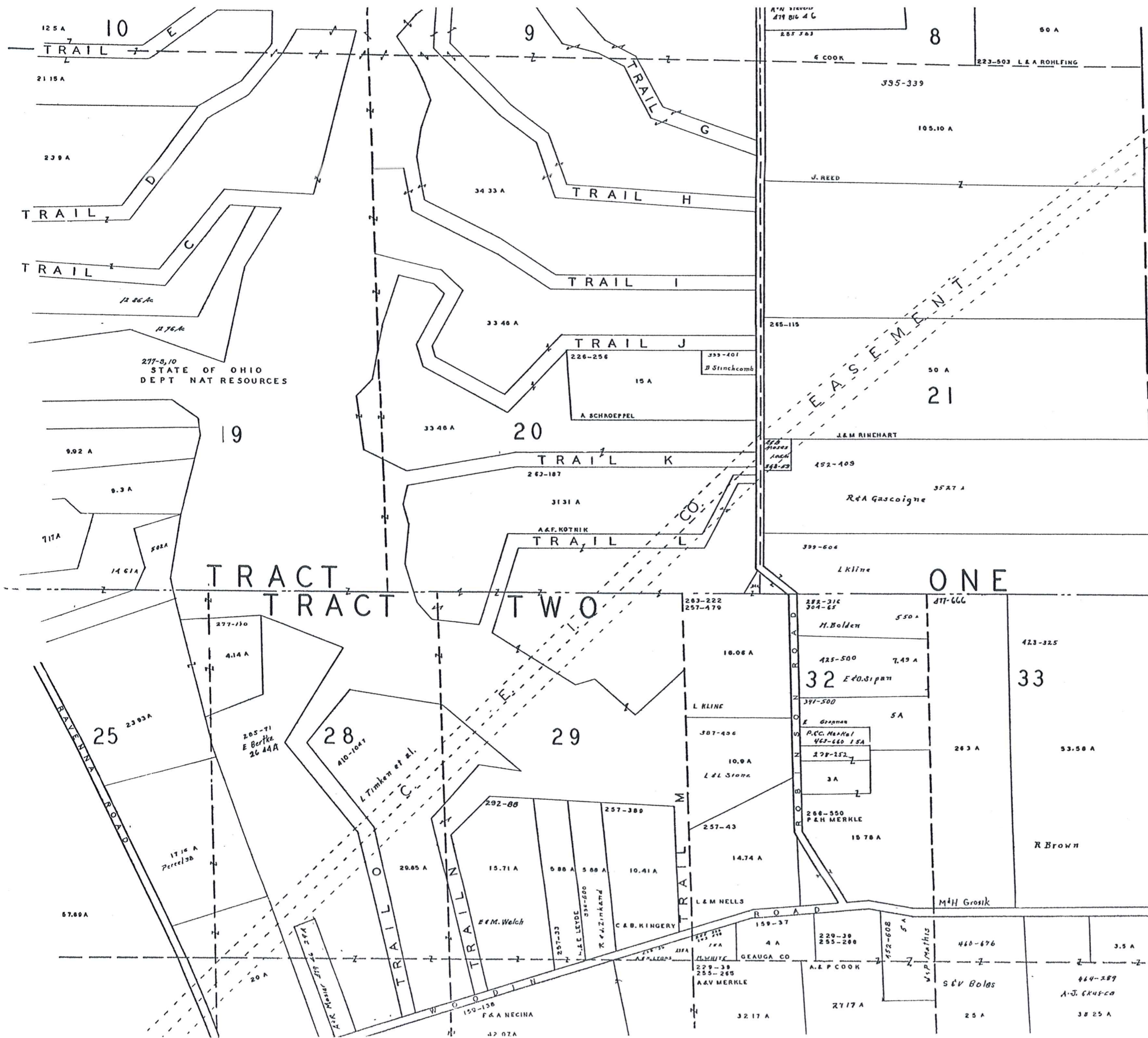


**CHARDON  
TWP - G  
NOT TO SCALE  
1968**

SCALE 1"=300'  
JAN. 1, 1968

A	B	C	D
E	F	G	H
I	J	K	L
M	N	O	P

CHARDON TWP



**CHARDON  
TWP - H  
NOT TO SCALE  
1968**

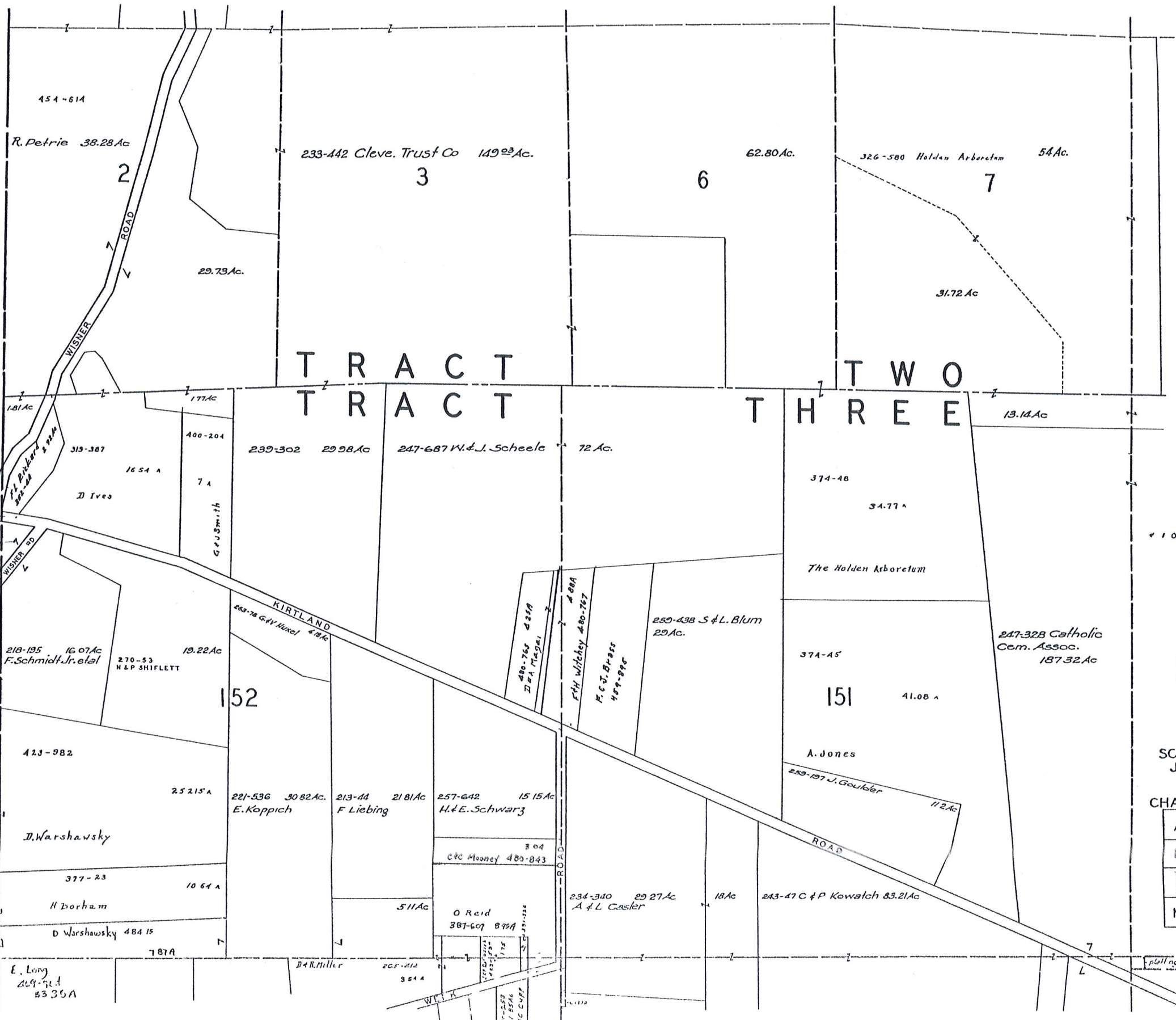


SCALE 1"=300'  
JAN. 1, 1968

A	B	C	D
E	F	G	H
I	J	K	L
M	N	O	P

CHARDON TWP.

C O U N T Y  
T O W N S H I P  
K I R T L A N D  
L A K E



\* 10 Reid 391-326 .32 ac.

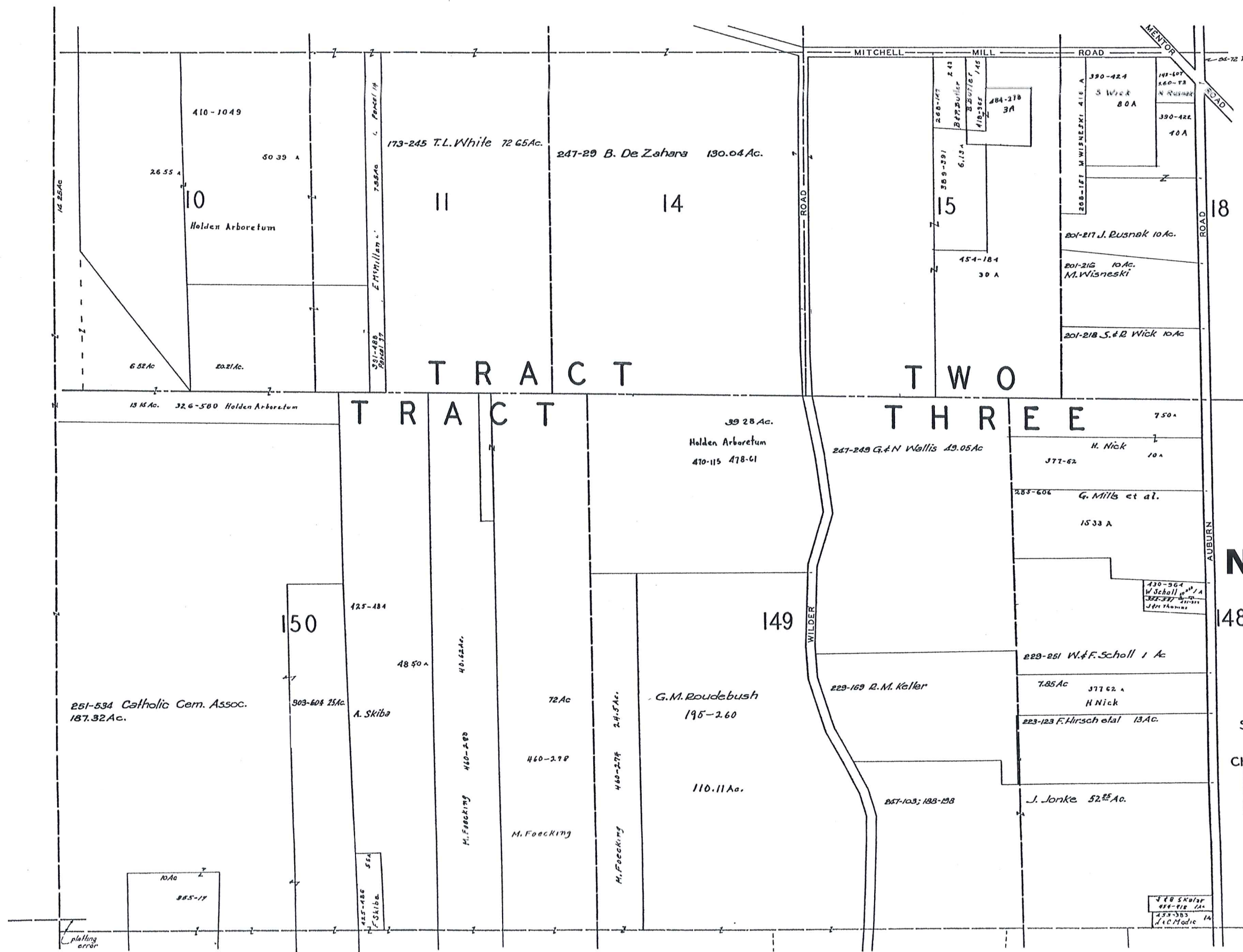
# CHARDON TWP - I NOT TO SCALE 1968

SCALE 1" = 300'  
JAN. 1, 1968

CHARDON TWP-I-

A	B	C	D
E	F	G	H
I	J	K	L
M	N	O	P

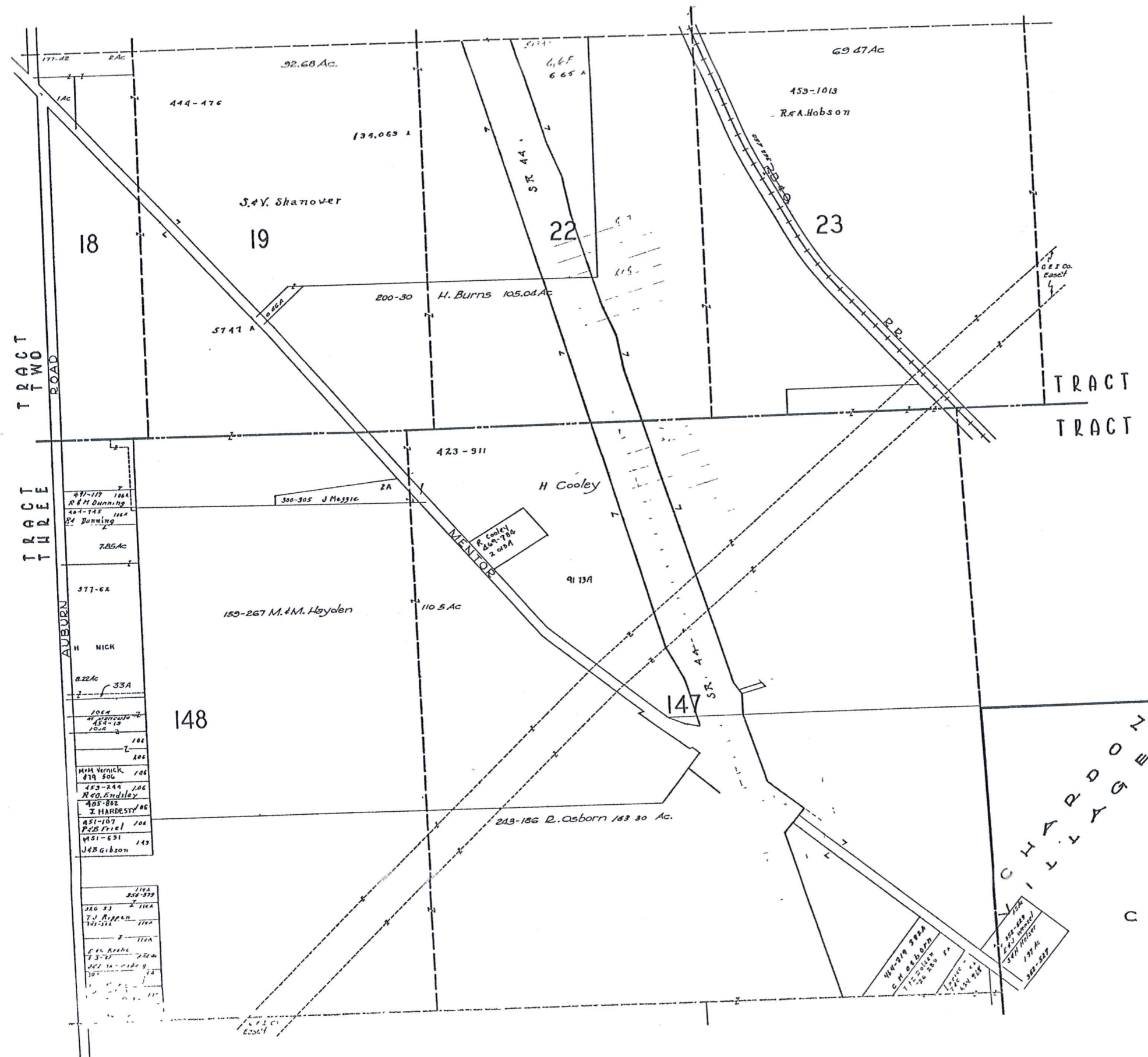
plus no error



**CHARDON  
TWP - J  
NOT TO SCALE  
1968**

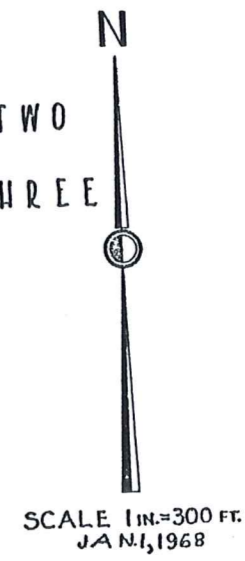
SCALE 1" = 300'  
JAN. 1, 1968  
CHARDON TWP.-J-

A	B	C	D
E	F	G	H
I	J	K	L
M	N	O	P



TRACT TWO  
TRACT THREE  
AUBURN ROAD

TRACT TWO  
TRACT THREE

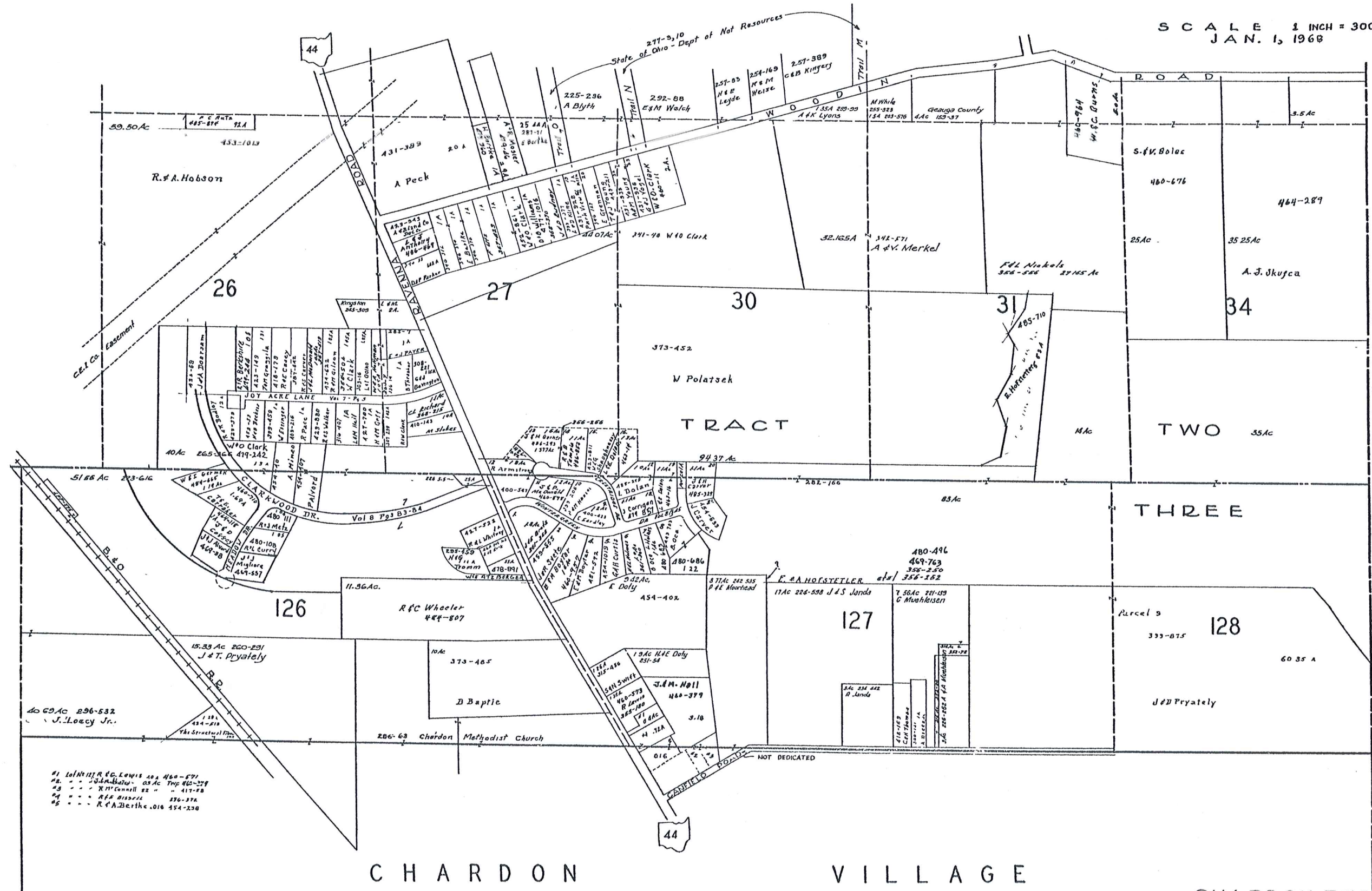


**CHARDON  
TWP - K  
NOT TO SCALE  
1968**

CHARDON TWP - K

A	B	C	D
E	F	G	H
I	J	K	L
M	N	O	P

SCALE 1 INCH = 300 FEET  
 JAN. 1, 1968



HAMBDENTOWNSHIP

CHARDON

VILLAGE

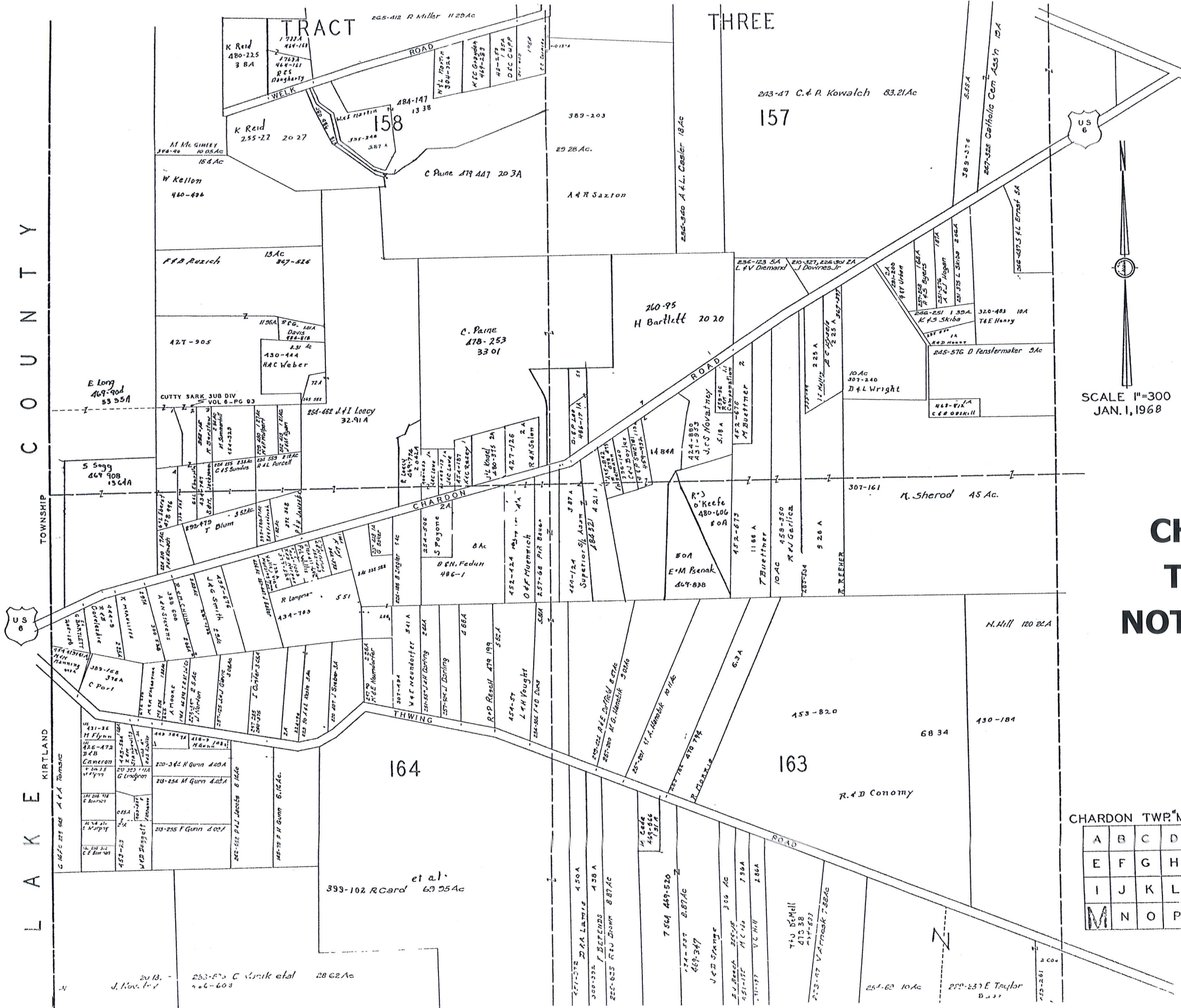
CHARDON TWP. - L -

**CHARDON  
 TWP - L  
 NOT TO SCALE  
 1968**

A	B	C	D
E	F	G	H
I	J	K	L
M	N	O	P

#1 Lot 117 R. G. Lewis 482-480-571  
 #2 - - - J. A. Kozak 453 Ac Twp 860-379  
 #3 - - - R. H. Conwill 82 - - - 417-58  
 #4 - - - R. F. Bissell 276-374  
 #5 - - - R. A. Berthel 454-230

C O U N T Y  
T O W N S H I P  
L A K E K I R T L A N D

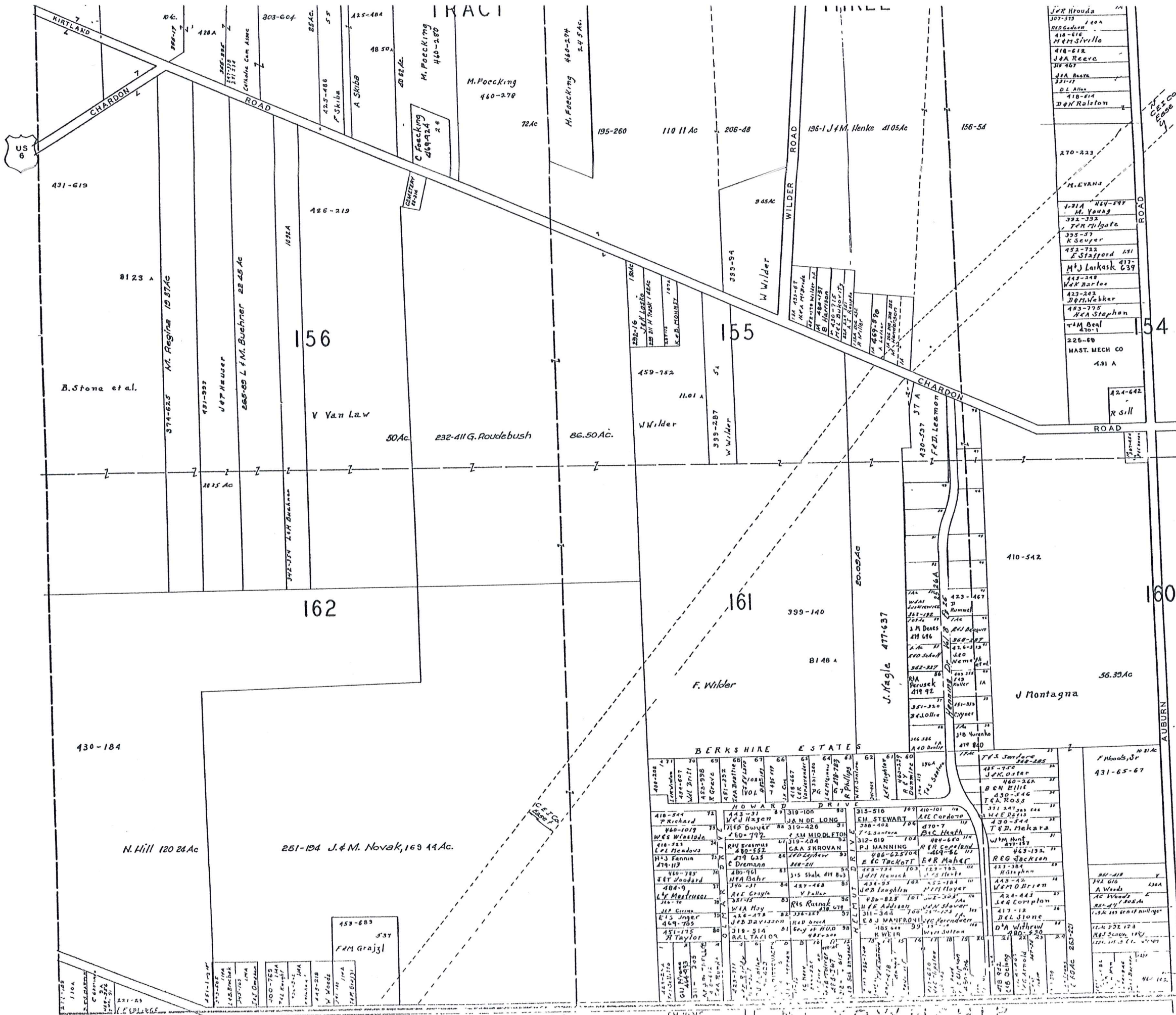


SCALE 1"=300  
JAN. 1, 1968

# CHARDON TWP - M NOT TO SCALE 1968

CHARDON TWP. M

A	B	C	D
E	F	G	H
I	J	K	L
M	N	O	P



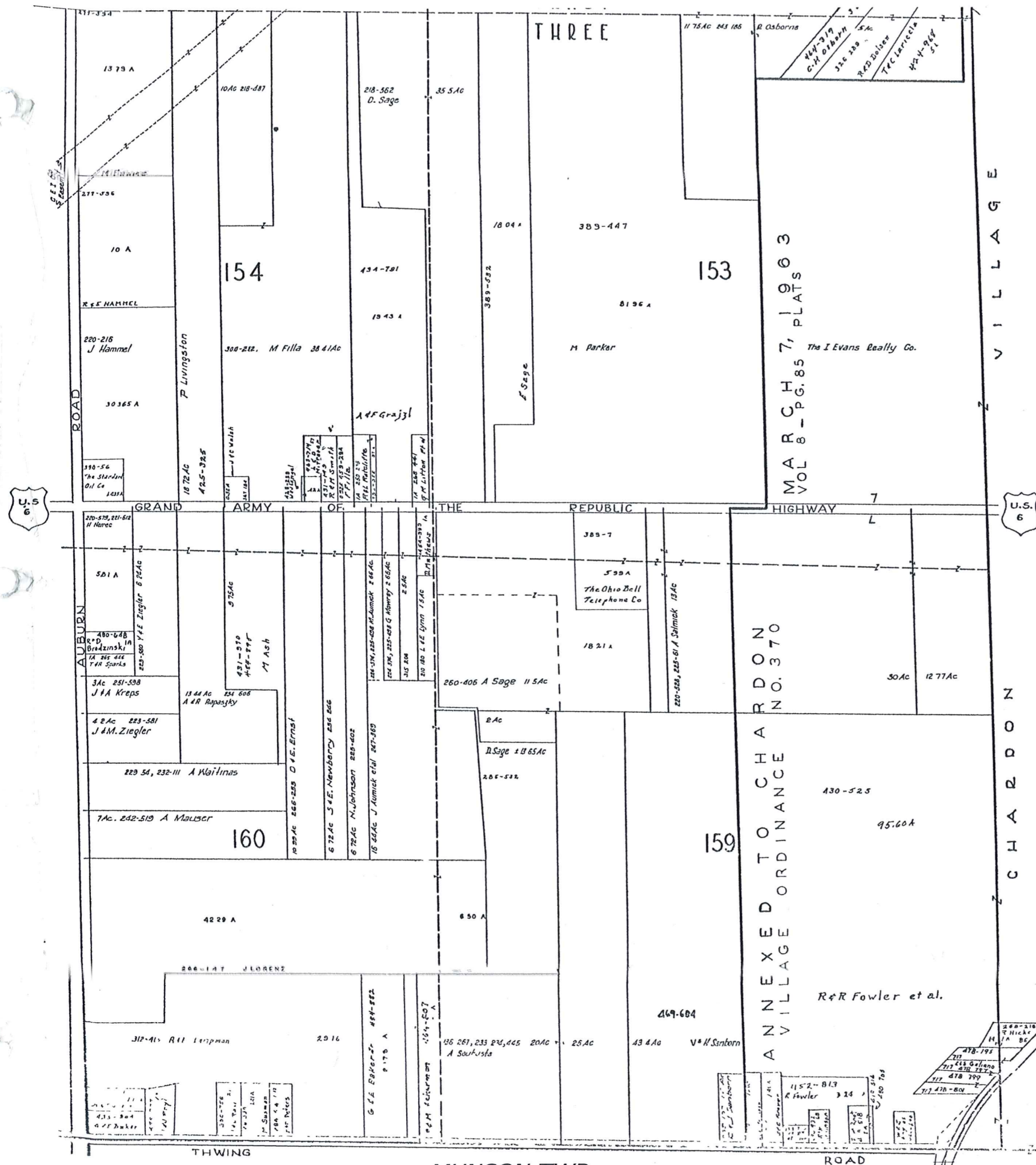
# CHARDON TWP - N NOT TO SCALE 1968

SCALE 1"=300'  
JAN. 1, 1968

CHARDON TWP-N-

A	B	C	D
E	F	G	H
I	J	K	L
M	N	O	P

Fowler's Milk Community  
Christian Church



SCALE 1 in. = 300 FT.  
JAN. 1, 1968

# CHARDON TWP - O NOT TO SCALE 1968

CHARDON TWP. -O-

A	B	C	D
E	F	G	H
I	J	K	L
M	N	O	P

MILINSON TWP

**PAGE MISSING**

**CHARDON  
TWP - P  
NOT TO SCALE  
1968**

**PAGE MISSING**